

AIMON XB™

User's Manual



Package Includes:

WAND, Mouse, Wireless Receiver Stick, XB Cable and User's Reference Card.



Receiver Stick



Reference Card



XB Cable



WAND



Mouse

Install Batteries:

The Mouse and the WAND each need one AA battery. Carefully open the battery cover under the Mouse and WAND and put one battery in each.

Note: The battery “-” electrode sides go to the spring end.

Use with the Xbox 360:

Connect to the Xbox 360:

- 1) Connect the Wired Xbox 360 controller to the XB cable supplied.
- 2) Plug in the XB cable into the Receiver Stick.
- 3) Plug the Receiver Stick into the Xbox 360 USB port.

Power Up:

Press the START button on the top of the Mouse Press the Guide button on the WAND to turn on.

After the WAND is on, the Guide button is used the same as the normal Xbox360 controller:



Functions in Xbox360 game play:

1. Pressing the Mouse wheel down is the RS.

2. Dead Zone and Mouse Speed:

By tweaking your Mouse Speed and adjusting the Dead zone, you can get the best performance for game play.

• To adjust the dead zone:

Press and hold the F button, you will see the game rotate to the right. When the game rotates faster, the dead zone is higher. Roll the Mouse wheel forward/backward to increase/decrease the dead zone. There is a point where the game rotation stops, this is what we call "F0". "F0" is the best point both smooth and speed game settings. Increasing the dead zone ("F6" as example) will make for faster game play but will lessen the micro-movements. Lowering the dead zone will lower the game speed but increase the mouse smoothness, it can be lowered to -F2 as example, you would lose the speed some degree but give you much better micro-movements. Gamers will find that different games require different settings.

• To tweak the mouse speed:

Normally the mouse speed is referenced as sensitivity. Press and hold the F button and click the mouse wheel Right/Left to increase/decrease the mouse speed. There are 10 speed settings available.

Most of the FPS games have controller right stick speed adjustment options. Adjust the mouse using the F button first.

Then set the controller speed within the game options to your normal game play style.

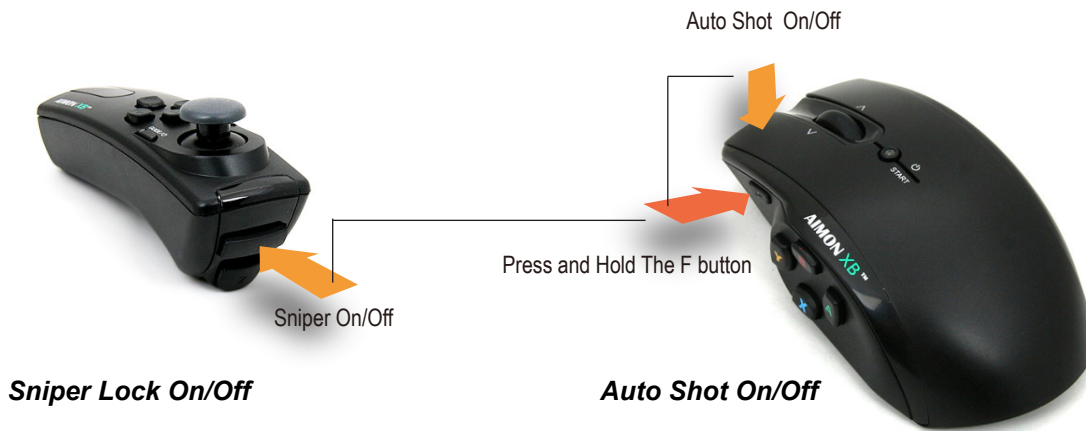


3. Auto Shoot:

Press and hold the mouse left key (RT) for rapid fire. The rate of rapid-fire speed can be adjusted with our Setup software. This feature can be turned on and off by pressing and holding the mouse F button and then press the mouse left button (RT).

4. Sniper Lock:

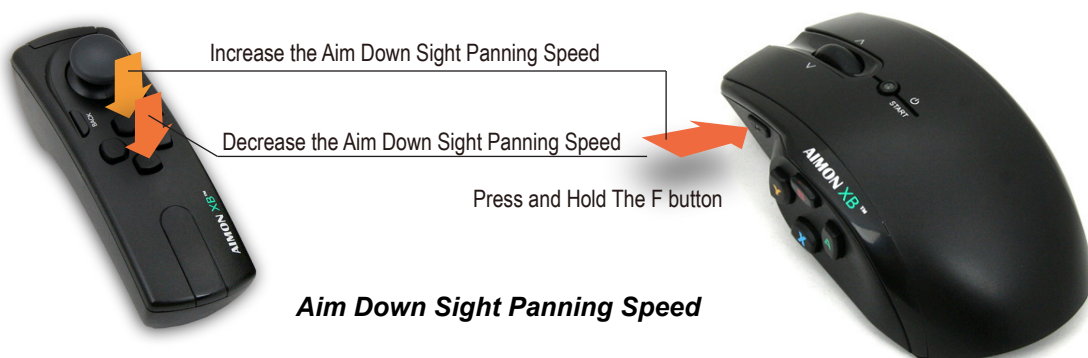
Some games require you to press and hold the LT to maintain aim. The AIMON XB has a Sniper mode that will keep the aim pressed without holding the LT. When Sniper Mode is enabled, press the LT to keep aim on and press LT again to exit continuous aim. To turn on or off Sniper Mode, press and hold mouse F while pressing LT.



5. Aim Down Sight Panning Speed:

When you turn on your aiming sight, you can adjust the panning speed, press and hold the F while pressing D-Pad Up to increase the speed, press and hold the F while pressing D-Pad Down to decrease the speed.

Each Dpad Up press would get +10% of the original speed, you can get up to 250% of the original speed.



6. Mouse wheel operations:

The Mouse wheel has two basic functions:

- a. **Default Mode (Fast move mode):** Allows the player to turn left / right or look up / down quickly.
 - Click the wheel right / left to turn right / left quickly.
 - Rolling the wheel forward / backward changes the look down / up.
- b. **Custom mode:** Allows the player to define the wheel to be any of the Xbox360 action buttons to the wheel, this is useful for player to take advantage of the quicker index finger in game play.

To define your own button map on the wheel use the Setup Software, it is available from our website.

To switch Fast Move Mode and Custom Mode, press and hold mouse F key while pressing RS.



Use with PC:

Plug the Wireless Receiver into your computer USB port, without pressing the Binding button on the Receiver.

The first time you plug the Stick into the port you will notice that Windows shows a message on the bottom right corner that says – “Installing New Hardware.” Allow Windows to finish installing your drivers by selecting all the default options. When Windows has finished, you will see a message on the bottom right corner that says “Your device is now ready to use.” It may go through several pop-up windows to finish the device installation.

Press the START button on the top of the Mouse and press the Guide button on the WAND to power up.

Functions on PC gameplay:

1. **Mouse resolution setup:**

CPI Settings:

Press and hold the mouse F button and roll the mouse wheel forward to increase the mouse CPI settings and backward to decrease the CPI settings. CPI settings are only applicable when using your mouse on the PC. LED on mouse flash once indicates the 400CPI, 2 indicates the 800CPI, 3 indicates the 1200CPI, and 4 indicates the 1600CPI.

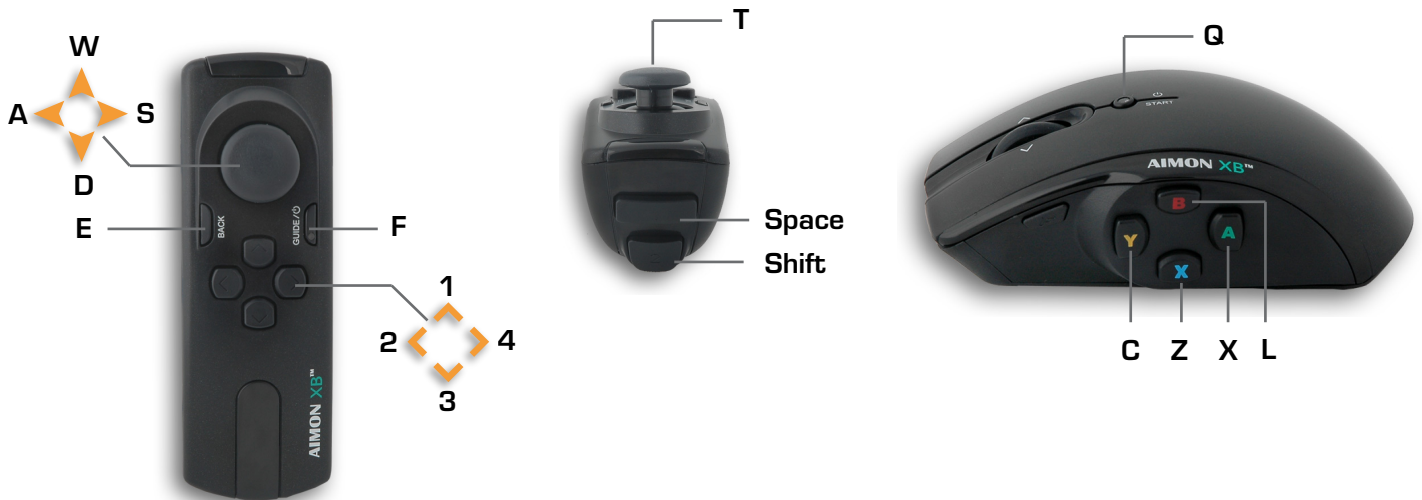


2. Button layout:

Use the AIMON XB Setup Software to change and set WAND or Mouse buttons to the button layout you prefer. Most games also allow you to change button layout.

The AIMON XB Setup Software can be found and downloaded from our website at www.Tuact.com.

The default Button Layout is as following:



Firmware and Software:

The AIMON XB firmware can be upgraded and configured using the Setup software. From time to time we may release free firmware upgrades to improve performance or adding new features. The new firmware will be posted on our web site with an explanation of any features or improvements for your consideration.

For more information and instructions about how to upgrade and setup your AIMON XB check out our website at www.Tuact.com

Battery Saving feature:

The Mouse or WAND will auto shut off after 5 minutes when no buttons or mouse movements.

When the LED lights on the Mouse or WAND flash slowly, it indicates a low battery. To turn off the mouse or WAND manually, press and hold the Guide button or the Power button for 3 seconds.

Device pairing:

At times, the mouse or WAND may need to be paired with the receiver Stick. You DO NOT have to and should not pair them unless:

1. You have changed the wireless channel using the Setup Software.
2. You get any new replacement mouse, WAND or receiver.

a. *To pair the Mouse with the Stick:*

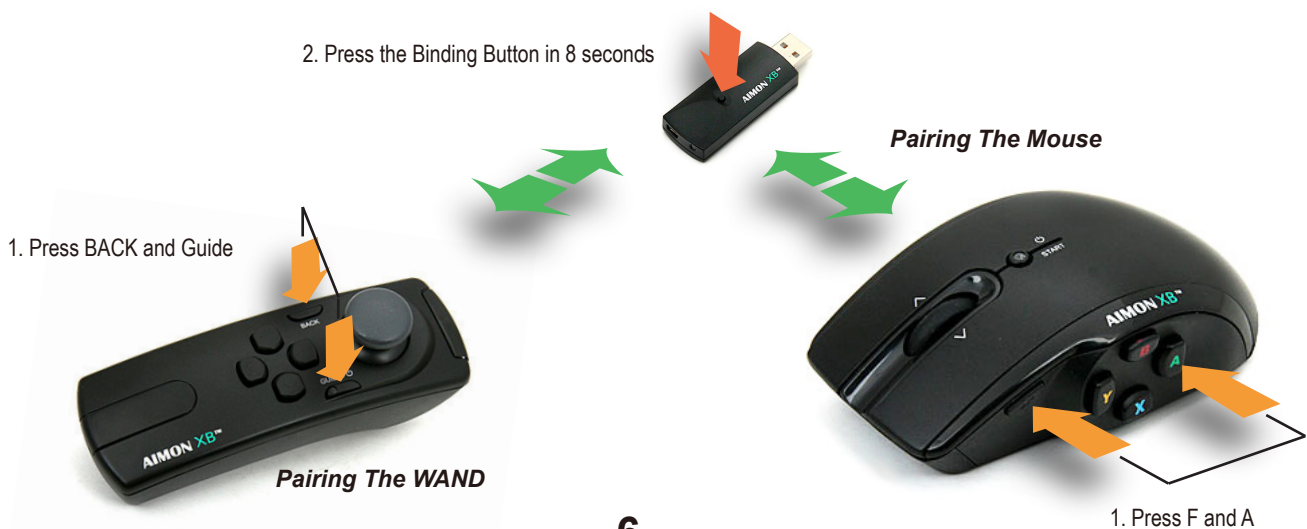
Press the F button and the A button at the same time, the LED on mouse will flashing fast to indicate that it is in pairing mode. Then press the Wireless Receiver binding button within 8 seconds. A solid light on the mouse indicates the pairing is complete.

b. *To pair the WAND with the Wireless Receiver:*

Press the BACK button and the Guide button at the same time. The LED on the WAND will flash fast to indicate that it is in the pairing mode. While the LED is flashing fast on the WAND, press the Wireless Receiver binding button. A solid light on the WAND indicates the pairing is complete.

If you miss pressing a device button or Receiver button during the pair process the device will return back to normal mode.

Note: You can only pair one device at a time during the pairing process. There is no need to pair the devices unless you have changed the RF channel or get a replacement device. There is no need to re-pair after you upgrade the firmware.



Technical Support:

Email: support@tuact.com or visit our web site at www.Tuact.com for technical assistance.

Warranty:

This product is warranted to the ORIGINAL purchaser for the normal intended use for a period of one year from the date of purchase.

If a defect covered under this warranty occurs, please contact your local distributor where you bought the product from. Tuact support doesn't replace the defectives directly.

Warning:

THIS ITEM INCLUDES THE INVISIBLE LASER COMPONENT, IT IS ADJUSTED AND TESTED AT FACTORY TO MEET THE SAFETY REGULATIONS, BUT WE STILL SUGGEST YOU NEVER LOOK AT THE SENSOR DIRECTLY.